



**ZUCKERBERG
SAN FRANCISCO GENERAL**
Hospital and Trauma Center

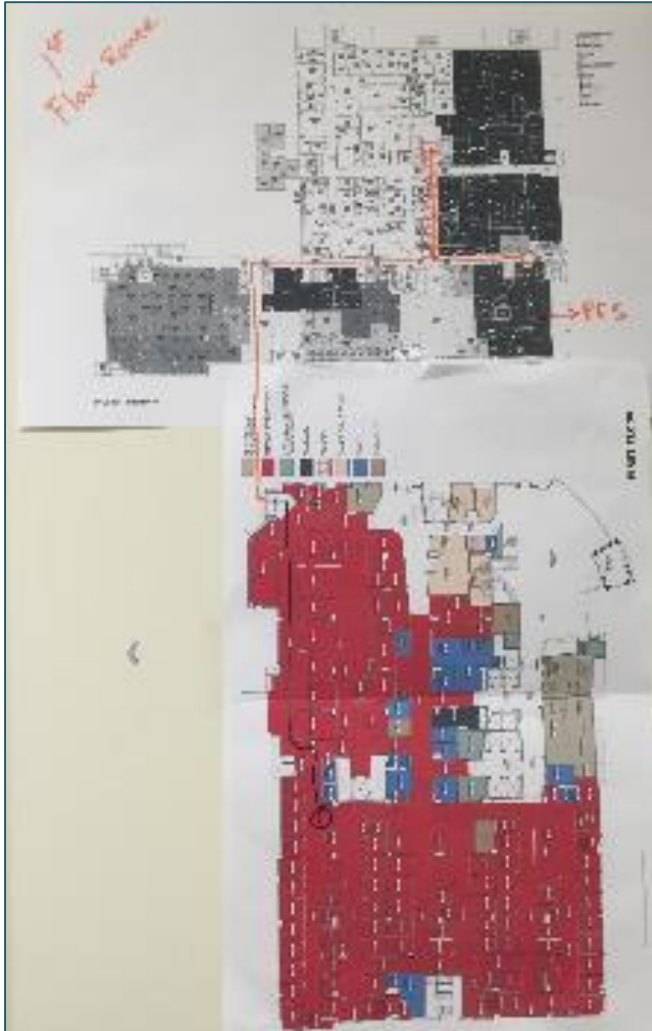
ZSFG Emergency Department 3P-3.4: Flow of Special Patient Populations

Joint Conference Committee
April 26, 2016



**San Francisco Department
of Public Health**

PES Transport Scenario #1 – 1st Floor Route



- Scenario #1: First Floor
- 332 seconds transport time
- 355 steps
- Included public hallways and areas
- Included outside pathway

PES Transport Scenario #2 – 2nd Floor Bridge



Deemed unsafe,
inappropriate for
patient transport

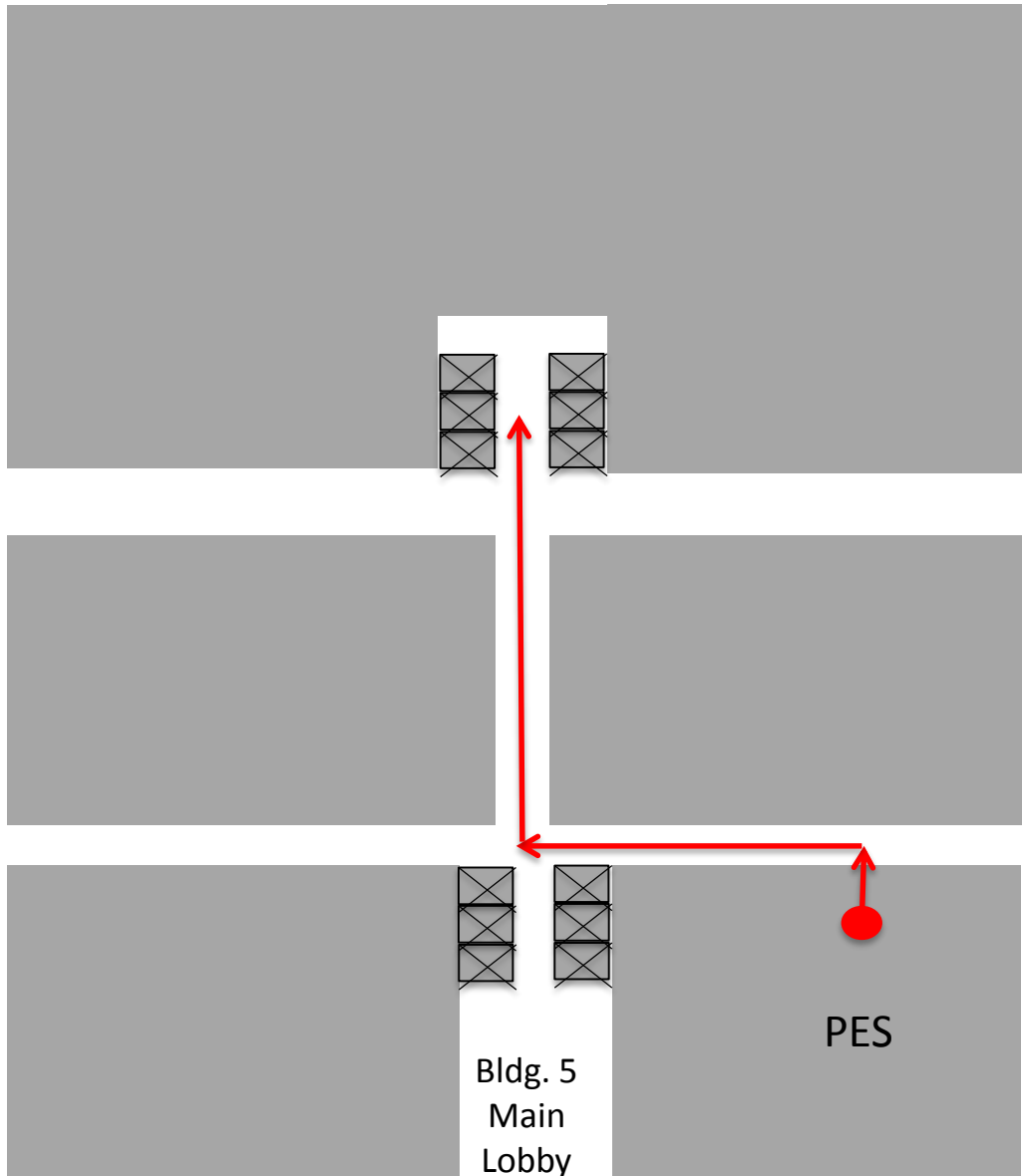
PES Transport Scenario #3 – Basement Tunnel



- Route #1: Basement
- 317 seconds (transport time)
- 345 steps

- Utilized service / patient elevators
- Completely inside pathway

Standard Route for Patient Transfers from PES to ED



1. Exit PES
2. Turn left into main corridor
3. Turn right towards Radiology
4. Take patient / service elevators to ground floor